

## Configuration – PAM Central - Help Note

2nd April 2008

### INDEX:

INTRODUCTION .....	1
THE INSTALL PROCESS.....	2
SETTING UP DATA FOLDERS .....	8
THE REGISTRY .....	9

### INTRODUCTION

This document explains the process of installing PAM software with the intention of using Citrix or Remote Desktop to login and run the software on a server.

Software includes:

- PAM QA Plus
- PAM UltraCrop
- PAM AusVit

## THE INSTALL PROCESS

To start the install process and have the Multi User functionality appear in the install screens the switch 'citrix' will need to be added to the command line for the install file. There are 2 ways of achieving this:

1. Start / Run / then type the full path of the install file and add the switch to the end of this path ie:  
"C:\Documents and Settings\Administrator\Desktop\PamFarmStar-624.exe" /citrix
2. Create a shortcut to the install file and edit the properties so that the Target Path has the Multi User switch at the end ie:

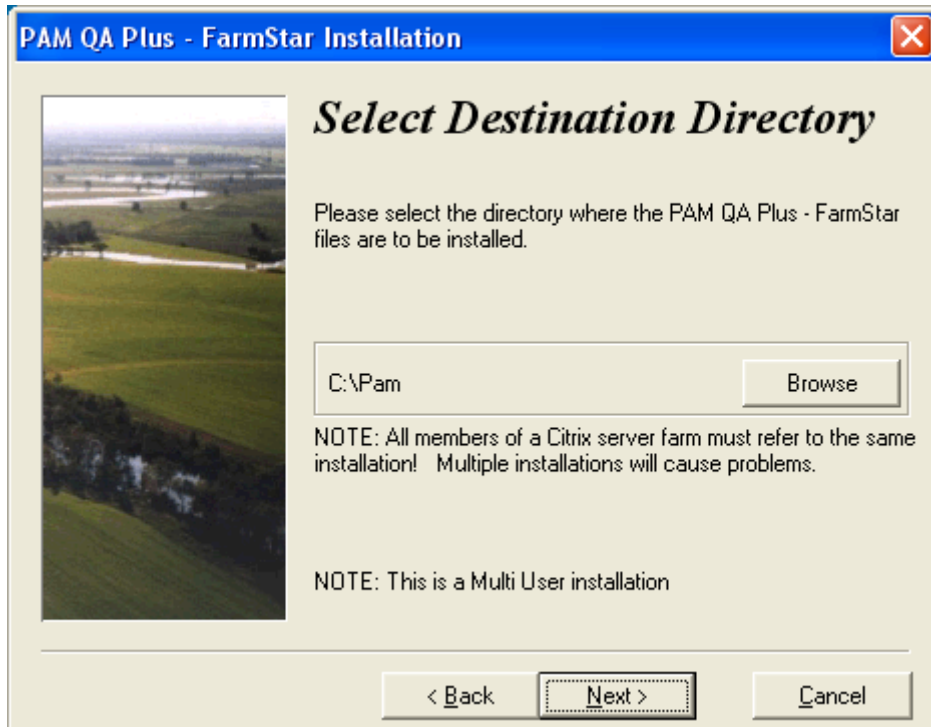
"C:\Documents and Settings\Administrator\Desktop\PamFarmStar-624.exe" /citrix

The install will need to be run on the server with administrative rights for both folders and the registry.

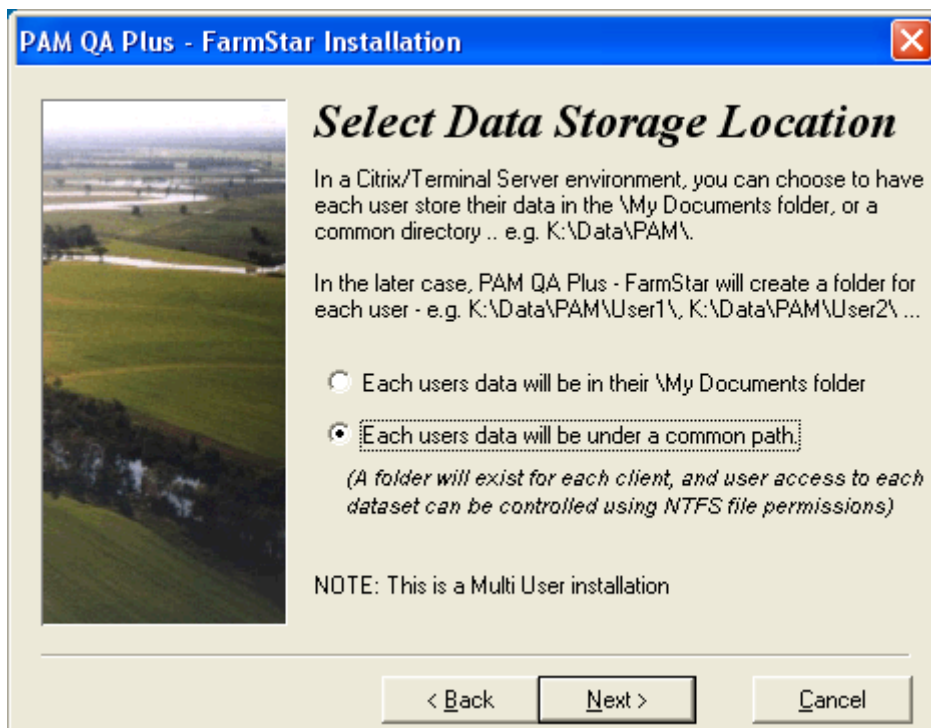
During the running of the install the following screens will appear:



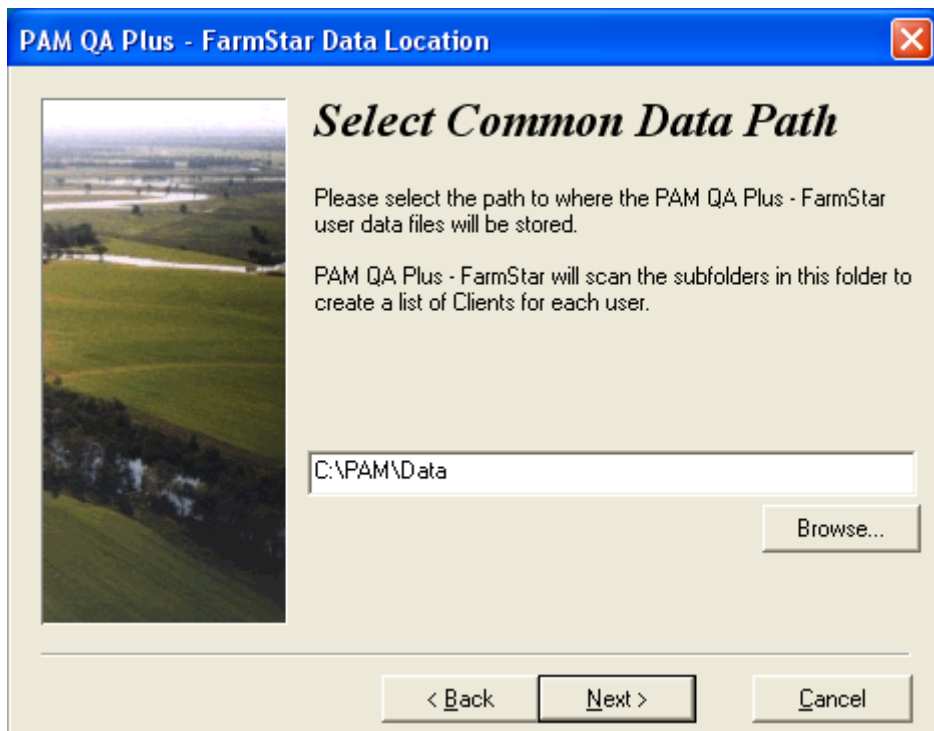
You have successfully activated the Multi User install functionality if you are able to see the '**NOTE: This is a Multi User Installation**' message on the first screen during the install.



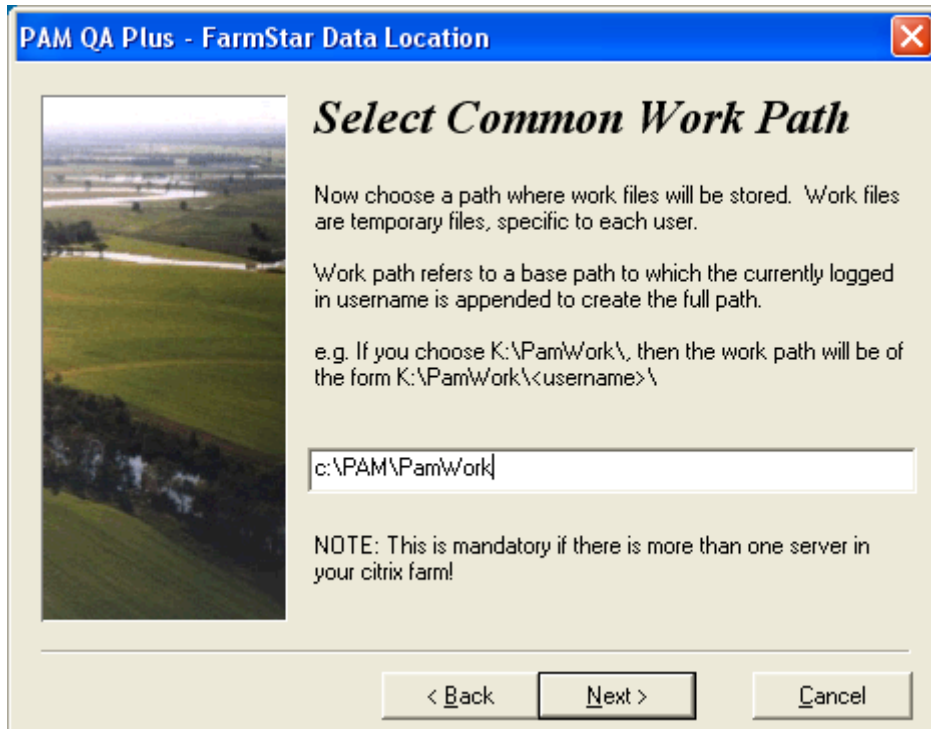
The destination directory is where the PAM installation files will be placed on the server.



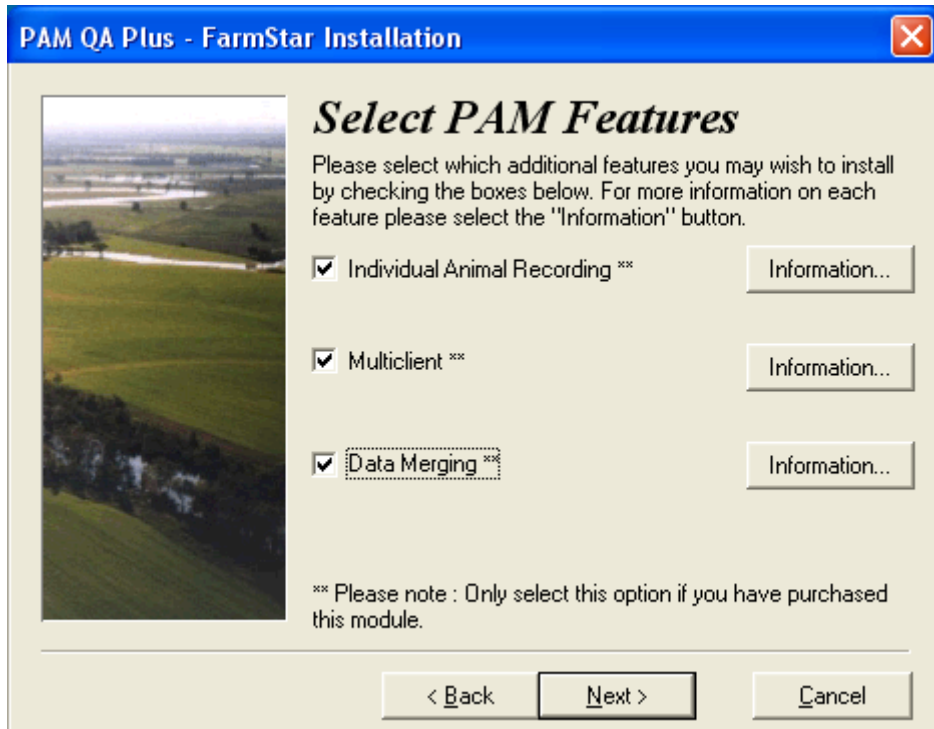
The Data Storage location is where the data bases will be stored. This may be set to the users' login \My Documents directory or to a common path on the server. Selecting the \My Documents folder, the path for the data files is automatic. When selecting the Common Path option, another dialog appears for you to select this path. Note: If users will have access to multiple datasets, then the Common Path option should be checked.



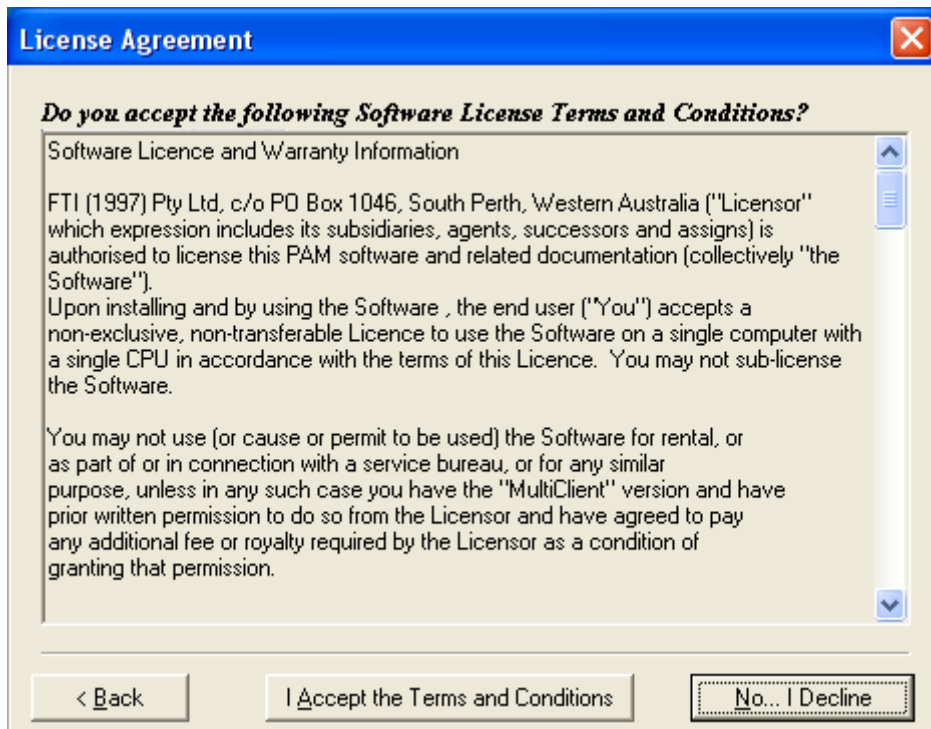
This is the common data path for the data files. Within this directory, folders are manually created and rights assigned for these folders. All data folders that a user has read / write access to within this Data directory will appear as clients within the PAM software. The folder with the same name as the login will appear as the main dataset for the user.



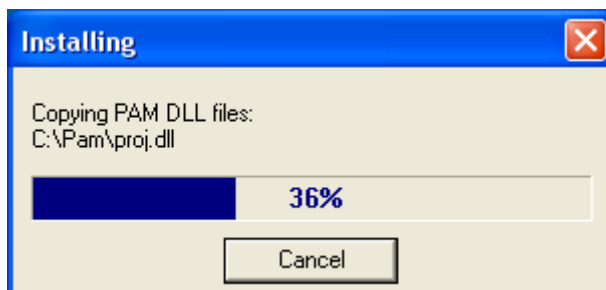
The Common Work Path is where temporary information is written to before being committed to the database. As there is no discernable information in these folders, read / write access may be assigned the root directory (PamWork) rather than to the individual folders for each user within this directory.



Additional Features are selected. Please note that these features are chargeable and you should only select the features that you are registered for, MultiClient should be checked as default for PAM Central installations.



Please read the License Agreement (grab a coffee) and select the 'I Accept the Terms and Conditions' button.



The installation takes place.



All things being equal, the installation will be successful and we can continue to configure your users.

## SETTING UP DATA FOLDERS

The initial setting up of data folders in the Multi User environment is a manual process.

To create an empty dataset for a user, simply copy the **Template** folder from the PAM installation directory and paste it into the assigned **PamData** directory. Rename the folder appropriately (Usually the name of the farm).

The PAM software will access this data folder for the users that have read/write permissions to this folder. All available datasets will appear as Clients under the MultiClient menu.

### New Datasets

The ability for users to create new datasets is also controlled by folder permissions. If PAM detects it has the ability to create new folders in the data directory, then the “Add Client” menu function is enabled on the “MultiClient” menu.

NB: the MultiClient menu will only be available if the user has more than one available dataset.

Relevant registry entries to the 'Central' installation:

[HKEY\_LOCAL\_MACHINE\SOFTWARE\Fairport\PAM]

"PrivateDataPath"="C:\\PAM\\Data"

"WorkPath"="C:\\PAM\\PamWork"

"Path"="C:\\Pam"