



2-8 Serengetti Drive  
Munruben, QLD 4125  
Phone (07) 3802 1458  
Mobile 0419 727 086  
Email [mail@agit.com.au](mailto:mail@agit.com.au)

Data Entry v6.4.9+ - BOM Rainfall Import Help Note  
3rd June 2009



Requests for enhancements to this document may be directed to [mail@agit.com.au](mailto:mail@agit.com.au)

## TABLE OF CONTENTS

<b>INTRODUCTION .....</b>	<b>3</b>
<b>ACTIVATION .....</b>	<b>3</b>
TURN ON RAINFALL RECORDING SYSTEM FEATURES.....	3
<b>ACTIVATED FEATURES.....</b>	<b>4</b>
RAINFALL RECORDING SYSTEM .....	4
REPORTS .....	4
<b>RETRIEVE BOM RAINFALL DATA .....</b>	<b>5</b>
ACCESSING THE CLOSEST WEATHER STATION .....	5
DOWNLOAD THE STATION DATA.....	6
EXTRACT THE RAINFALL DATA FROM THE DOWNLOADED FILE .....	7
<b>IMPORT THE DOWNLOADED DATA INTO PAM .....</b>	<b>7</b>

## INTRODUCTION

There are hundreds of BOM (Australian Bureau of Meteorology) weather stations around Australia and now rainfall data can be downloaded from any one of them and imported in your PAM software.

This document explains how to download rainfall data from the BOM web site and import that rainfall weather station data into PAM.

You are able to import the BOM rainfall data and add it to your own, or replace all rainfall data with that downloaded.

Importing historic rainfall data will allow long term averages to be calculated in PAM, also allowing (should there be more than 10 years rainfall data available) decile range charts to be shown.

Having rainfall data in PAM allows the crop Water Use Efficiency calculations to take into account rainfall events.

Software Includes:

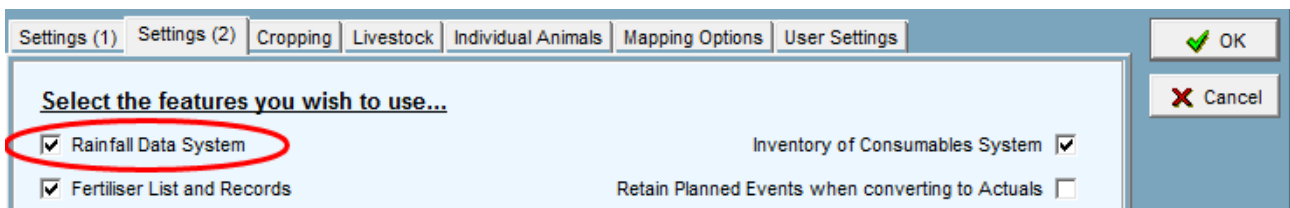
- PAM QA Plus
- PAM UltraCrop
- PAM AusVit

## ACTIVATION

### TURN ON RAINFALL RECORDING SYSTEM FEATURES

Menu: Configuration -> Customise PAM QA Plus Program -> Settings (2) tab...

Check the 'Rainfall Data System' feature



## ACTIVATED FEATURES

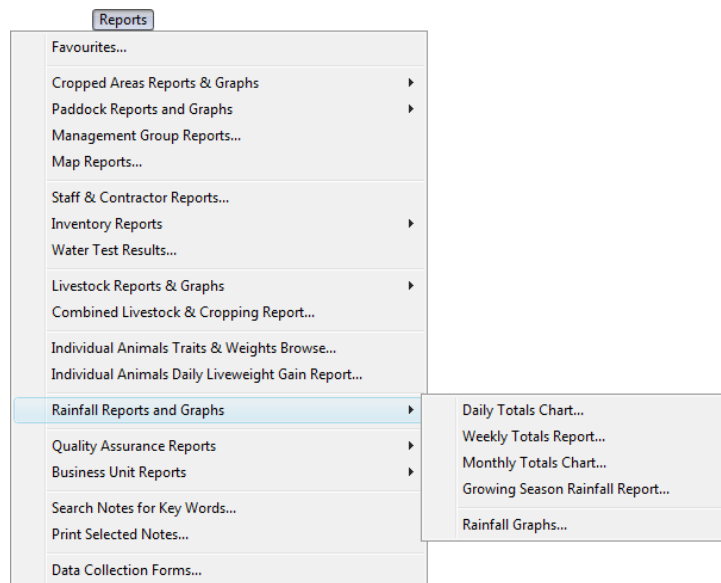
### RAINFALL RECORDING SYSTEM

On the tool bar across the top of the PAM screen, you will have access to the Rainfall Recording System:



### REPORTS

The Rainfall Reports & Graphs is added to the list of Reports:



## RETRIEVE BOM RAINFALL DATA

### ACCESSING THE CLOSEST WEATHER STATION

Use the following link to navigate to the BOM Weather Station Data web page:

<http://www.bom.gov.au/climate/data/weather-data.shtml>

You can see from the following example:

1. Monthly Rainfall is selected (there is no other option at the time of writing this help note)
2. Type in your closest town in the 'Location' field and then select the correct choice from the matching towns list when it becomes populated.
3. Select the appropriate weather station in step 3. Once the station is selected, then graph will be shaded for the years that have weather data available and the number of the station will appear in the box under 'Download the data for this station'.

#### Weather Station Data

[About Weather Station Data](#)

##### 1: Select the type of data

Monthly rainfall

The first data available are monthly rainfall.

##### 2: Select the Bureau station number

Known station number

Search by name

Search by distance

##### 1 Your location

Search region: Australia

Location: Brisbane

Find

##### 2 Matching towns (click one to select it)

ALBION (BRISBANE CITY), QLD, 27.43°S, 153.04°E  
ASCOT (BRISBANE CITY), QLD, 27.43°S, 153.06°E  
BANKS CREEK (BRISBANE CITY), QLD, 27.38°S, 152.75°E  
BERRINBA (BRISBANE CITY), QLD, 27.65°S, 153.08°E

More information:  
[Geoscience Australia](#)  
(opens new window)

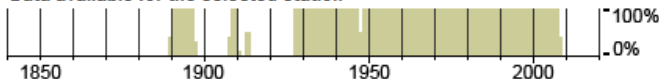
##### 3 Nearest Bureau stations (click one to select it)

Only interested in open stations

040222 KALINGA BOWLS CLUB QLD (2.1km away)  
040488 GRANGE BOWLING CLUB QLD (2.2km away)  
040216 BRISBANE SHOW GROUNDS QLD (2.4km away)  
040212 EAGLE FARM RACECOURSE QLD (2.7km away)  
040911 HILLTOP GARDENS QLD (3.8km away)

More information about  
the selected station  
(opens new window)

##### Data available for the selected station



Download the data for this station

040216

Get Data

## DOWNLOAD THE STATION DATA

After finding the appropriate weather station for you, click the 'Get Data' button at the bottom of the form you have just completed:

[Download the data for this station](#)

040216

You will need to read, understand and accept the Bureau's conditions:

Users of the website agree to be bound by the terms and conditions in the [Copyright](#) and [Disclaimer](#). Your use of and access to this site acknowledges your acceptance of these terms and conditions.

I hereby accept the terms and conditions as stated above.

The next page will allow you to download the rainfall data. Click the link that reads 'Data file (csv)' as highlighted below:

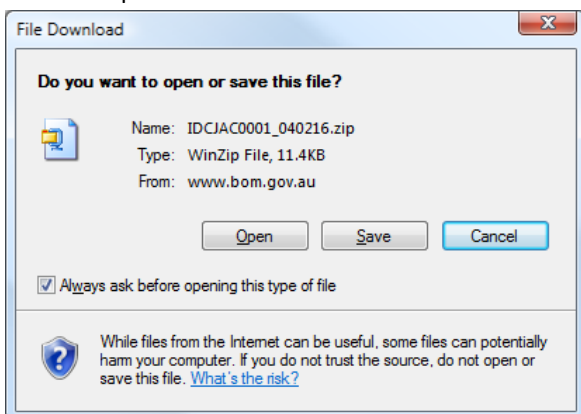
### Monthly rainfall BRISBANE SHOW GROUNDS

[About this page](#) | [About Monthly Rainfall](#) | [Data file \(csv\)](#) | [Print file for this site \(pdf\)](#) | [Site selection menu](#)

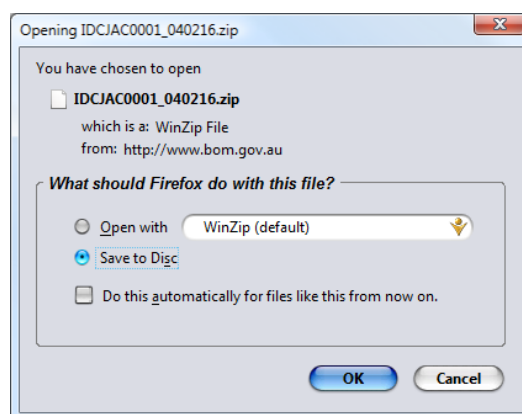
<b>Site name:</b> BRISBANE SHOW GROUNDS	<b>Site number:</b> 40216	<b>Commenced:</b> 1889
<b>Latitude:</b> 27.45° S	<b>Longitude:</b> 153.03° E	<b>Elevation:</b> 16 m
	<b>Operational status:</b> Open	

Depending on which internet browser you are using you will be faced with a screen such as one of these below. In either case, you will need to select 'Save'. Ensure that you save the file to somewhere on your PC that you are going to be able to find once the download is completed, the desktop is always good and very easy to find.

Internet Explorer

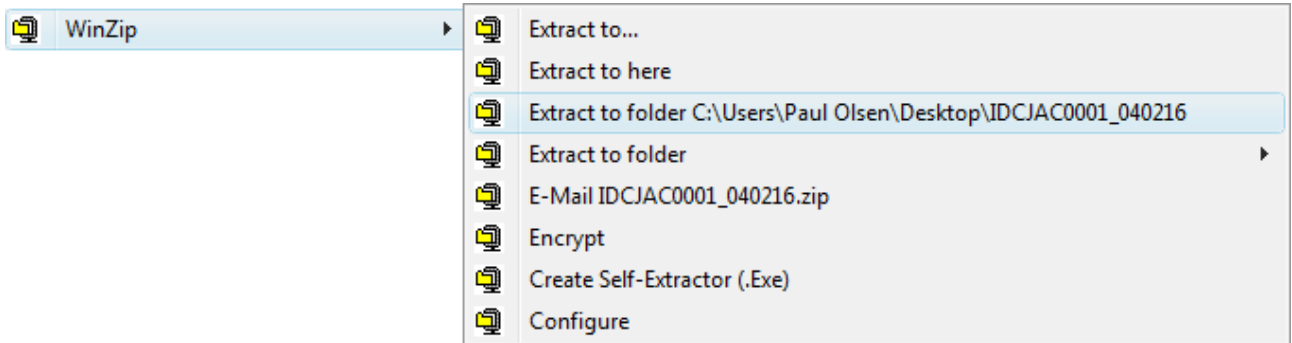


Firefox



## EXTRACT THE RAINFALL DATA FROM THE DOWNLOADED FILE

After finding the file that you just downloaded, you will need to extract the files from the compressed archive. Simply right click on the downloaded file and if you have WinZip installed, left click on 'WinZip', then extract to folder as below:



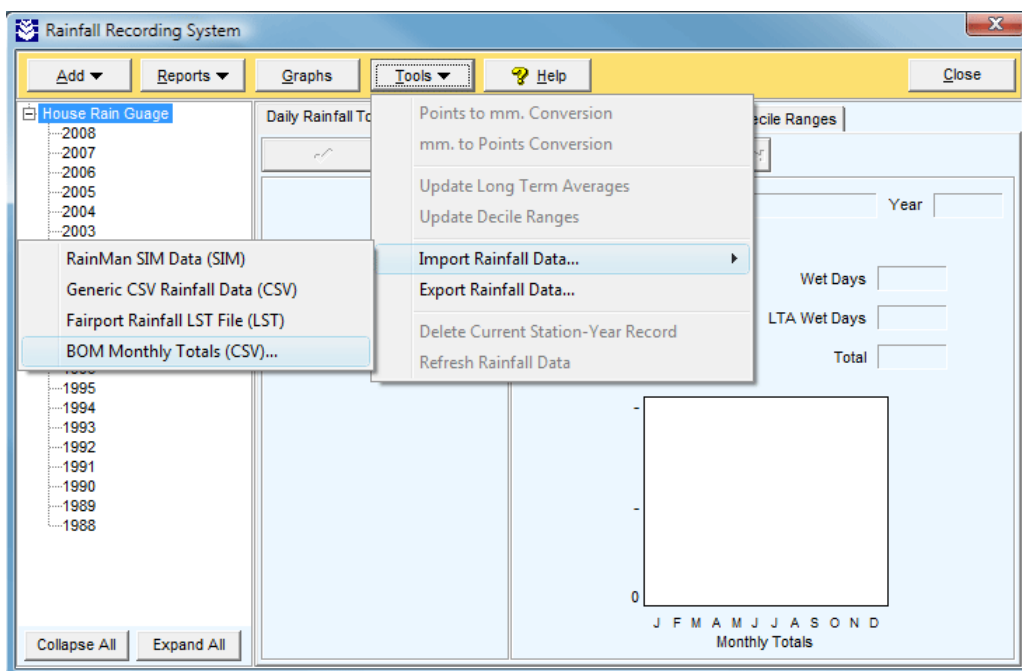
If you do not have WinZip installed, you can still use the inbuilt Windows archive tool. Right click on the downloaded file and select 'Extract All', and then follow the prompts in the archive wizard.

## IMPORT THE DOWNLOADED DATA INTO PAM

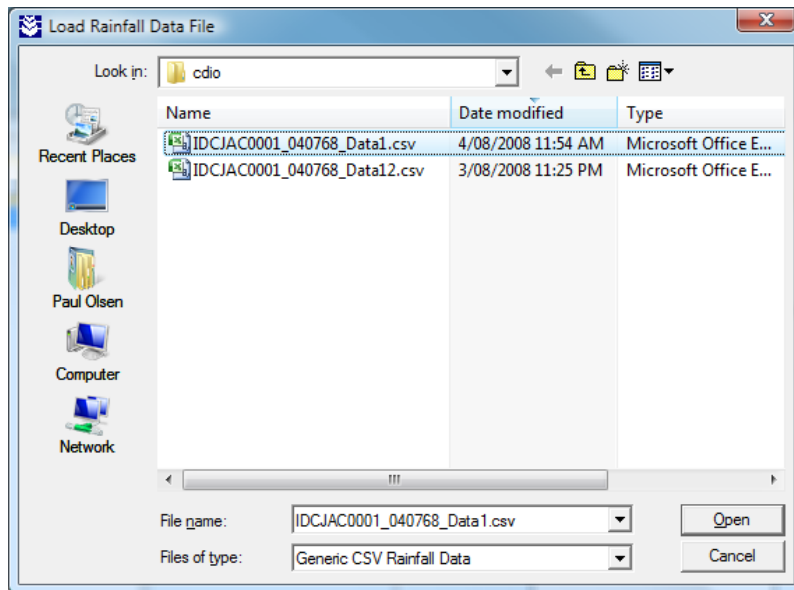
Open the Rainfall Recording System by clicking the Rainfall picture button at the top of the PAM screen:



Using the tools menu, select Import Rainfall Data / BOM Monthly Totals (csv):



In the file selector screen, navigate your way to the extracted Rainfall data. There may be more than one folder in the downloaded archive, however, find the file that ends with 'Data1.csv'. You can see below that there is also a file that ends with 'Data12.csv', do not select this file. Click Open.

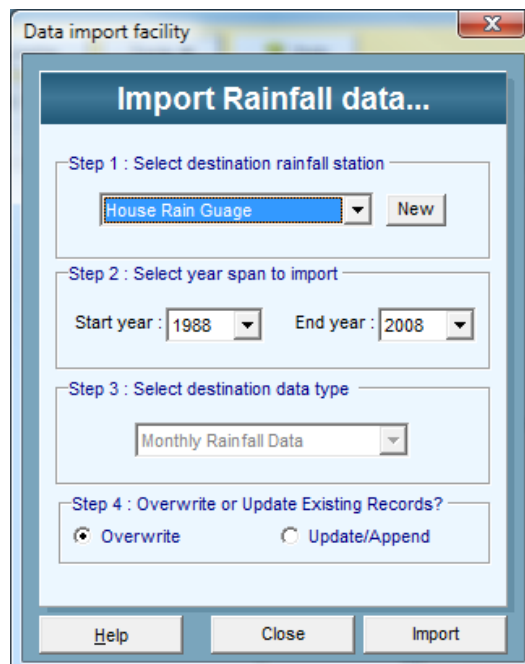


The resulting screen allows you to assign the imported rainfall data to a particular rainfall station that has been set up in PAM in Step 1.

Step 2 is automatically populated with start and end years, there is no need to alter these.

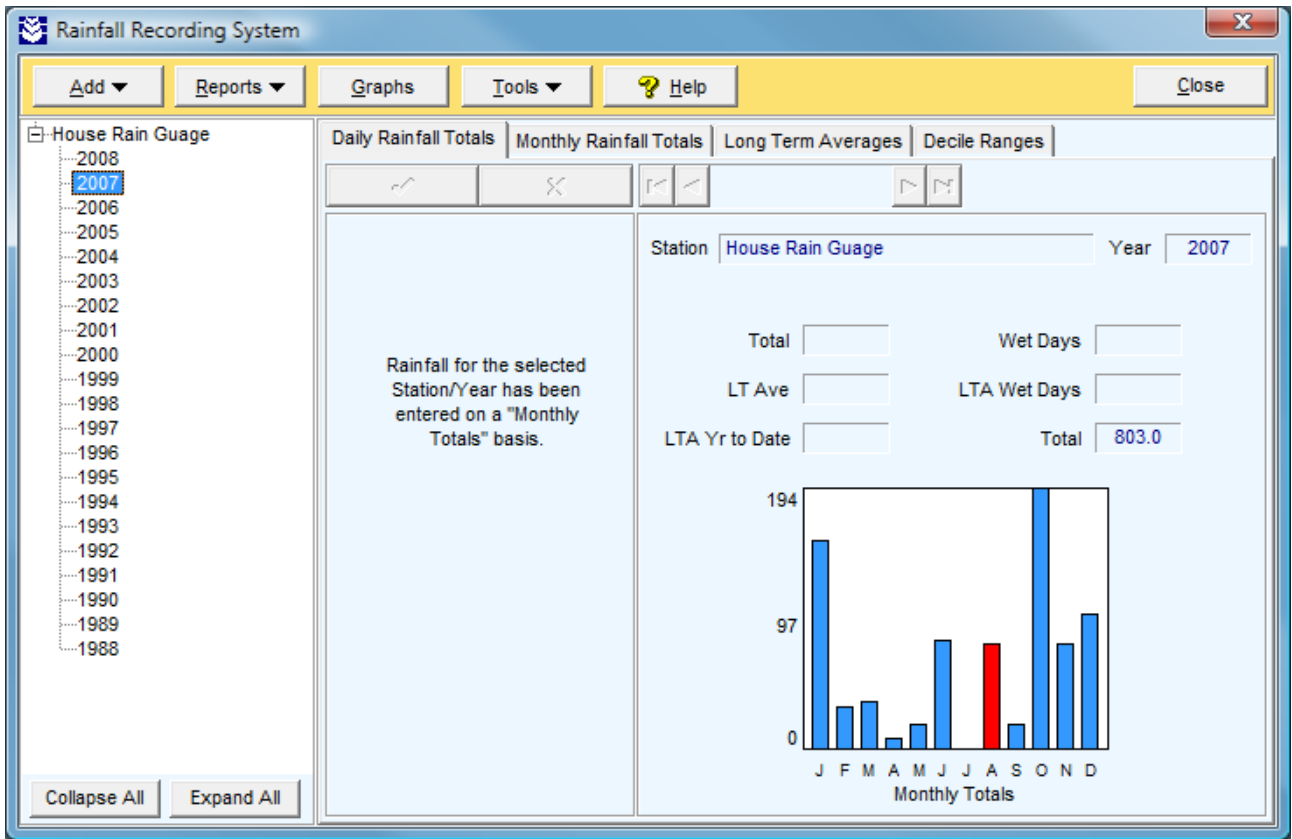
Step 3 cannot be modified

Step 4 allows you to overwrite any existing rainfall data, or update existing rainfall data with that being imported.



Click 'Import' to add/overwrite rainfall data in PAM.

You will now have all rainfall data available in the downloaded file in your PAM database as shown below.



All available rainfall data in the downloaded file is now a part of your PAM database.

One last thing to do is to update decile ranges by clicking 'Tools / Update Decile Ranges' & 'Tools / Update Long Term Averages'.