

Mapping – Moving & Merging Layers - Help Note

INDEX:

INTRODUCTION	1
LAYER QUICK SELECTOR	2
TURNING ON THE LAYER QUICK SELECTOR:	2
MOVING LAYERS	2
LAYER MANAGER	3
OPENING THE LAYER MANAGER:	3
MOVING LAYERS	3
MERGING & MOVING LAYERS.....	4
<i>Move Layer Dialog</i>	4
<i>Merge Layer Dialog</i>	4

Introduction

This document explains how to move and merge layers within the mapping section of Fairport Farm Software.

Software includes:

- PAM QA Plus with Mapping
- UltraCrop with Mapping
- AusVit with Mapping
- gpMapper
- FarmStar Lite

Moving layers is important to be able to order your mapping layers so that more opaque objects (such as images) are always at the bottom of the layer group allowing other objects (such as paddock boundaries) to be drawn and viewed on top of them.

Merging layers allows files to be imported and merged with existing layers, or to group similar objects that already exist.

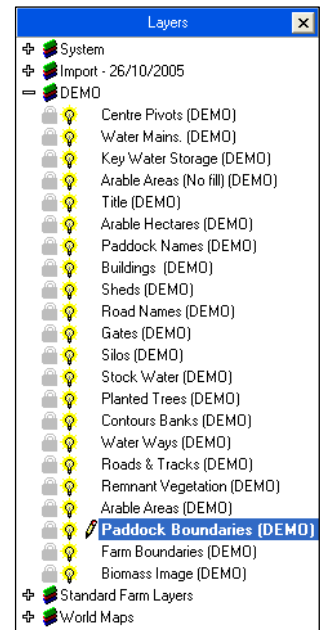
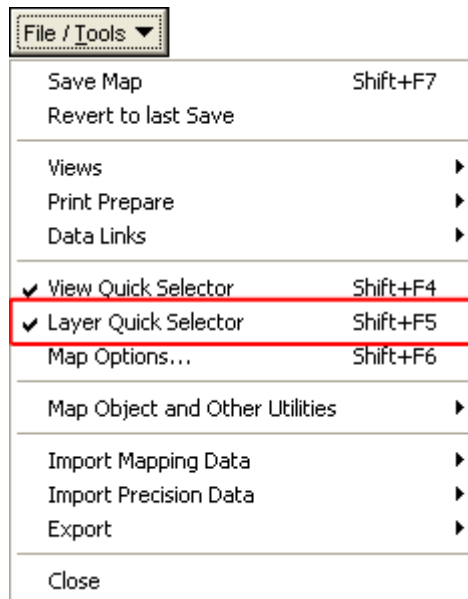
Layer Quick Selector

Turning on the Layer Quick Selector:

Open your mapping section of the software by using the mapping picture button along the top of the software or by pressing the F5 key on your keyboard.

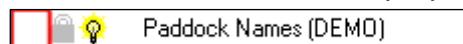
When in the mapping section of your software, you should see the Layer Quick Selector down the left hand side of your screen →

If the Layer Quick Selector is not visible, you can switch it on by selecting the Tools button, then placing a tick next to 'Layer Quick Selector' or when in the mapping section, hold down the SHIFT key and press the F5 button on your keyboard.



Moving Layers

To move a layer within the same layer group, or to another layer group simply click and hold your left mouse button down to the left of the lock icon for the layer you wish to move (see the red square in the image →



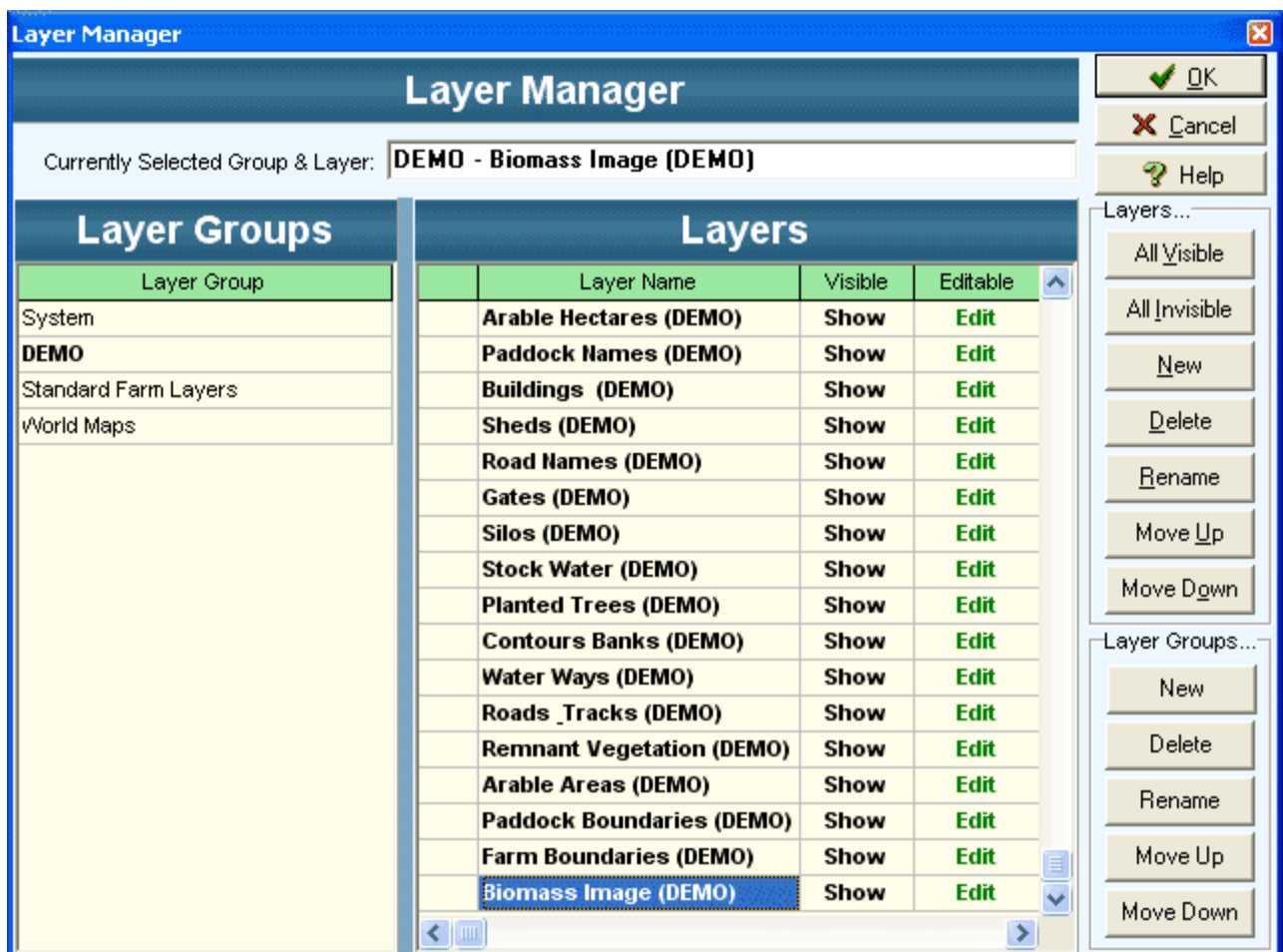
Then drag the layer to preferred position (you will notice that the icon changes) in the layer group, or to another. Let go of the mouse button and the jobs finished.

Layer Manager

Opening the Layer Manager:

Open your mapping section of the software by using the mapping picture button along the top of the software or by pressing the F5 key on your keyboard.

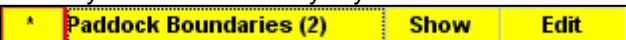
To open the Layer Manager click the Layers button →



Moving Layers

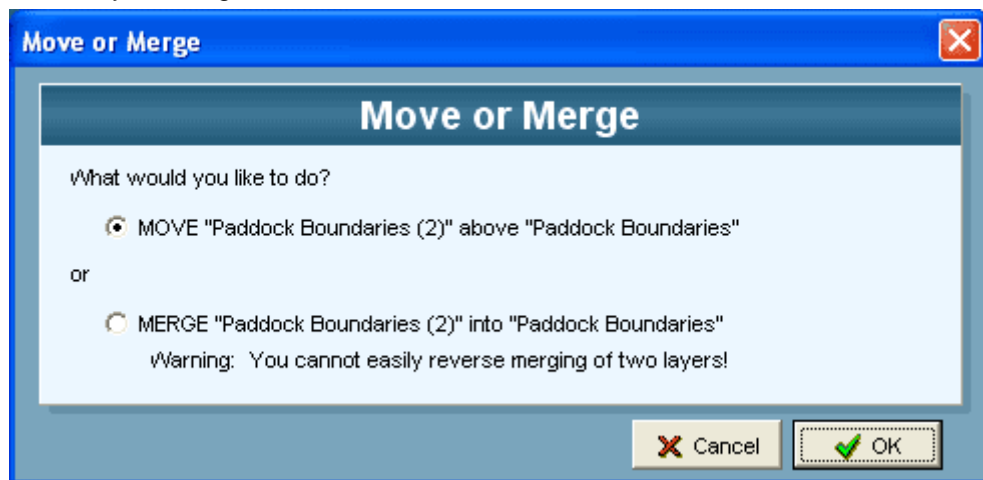
To move a layer within the same layer group simply select the Layer Group that contains the layer that needs to be moved. Then select the layer. Then click the Up or Down buttons within the layers group of buttons to shift the layer, you will notice it changing position as you click.

Merging & Moving Layers

To move, or merge a layer within the same layer group, or to another layer group simply click and hold your left mouse button down to the left of the layer name for the layer you wish to move or merge (see the red square in the image) → 

Then drag the layer to the preferred position or to the preferred layer to be merged (you will notice that the icon changes) in the layer group, or to another layer group on the left hand side of the layer manager. Let go of the mouse button and you will have the option to merge or move the layer(s)

Move Layer Dialog



Merge Layer Dialog

