

Reporting - Browse Any Dataset

24-02-2007

INDEX:

INTRODUCTION 1
ACTIVATION..... 2
BROWSE ANY DATASET 2
 DATA TABLES 2
 SCREEN LAYOUT..... 3
 FILTER DIALOG..... 4

Introduction

This document explains the use of the 'Browse Any Dataset' functionality of the PAM software.

The Browse Any Dataset functionality can be used to create custom or one-off reports using your production data.

To demonstrate the Browse Any Dataset feature this help note will run you through how to gain information on Insecticides sprayed on a crop in a particular season. The dataset used in this example is available in your PAM software by using the "Utilities' menu and selecting the 'Switch To Demonstration Data' option. After you have completed the exercise, simply select the 'Switch To main dataset' from the same menu.

Software includes:

- PAM QA Plus
- PAM UltraCrop
- PAM AusVit

ACTIVATION

The Browse Any Dataset feature is on by default and cannot be turned off or removed from the PAM interface.

You can find the Browse Any Dataset feature by clicking on the



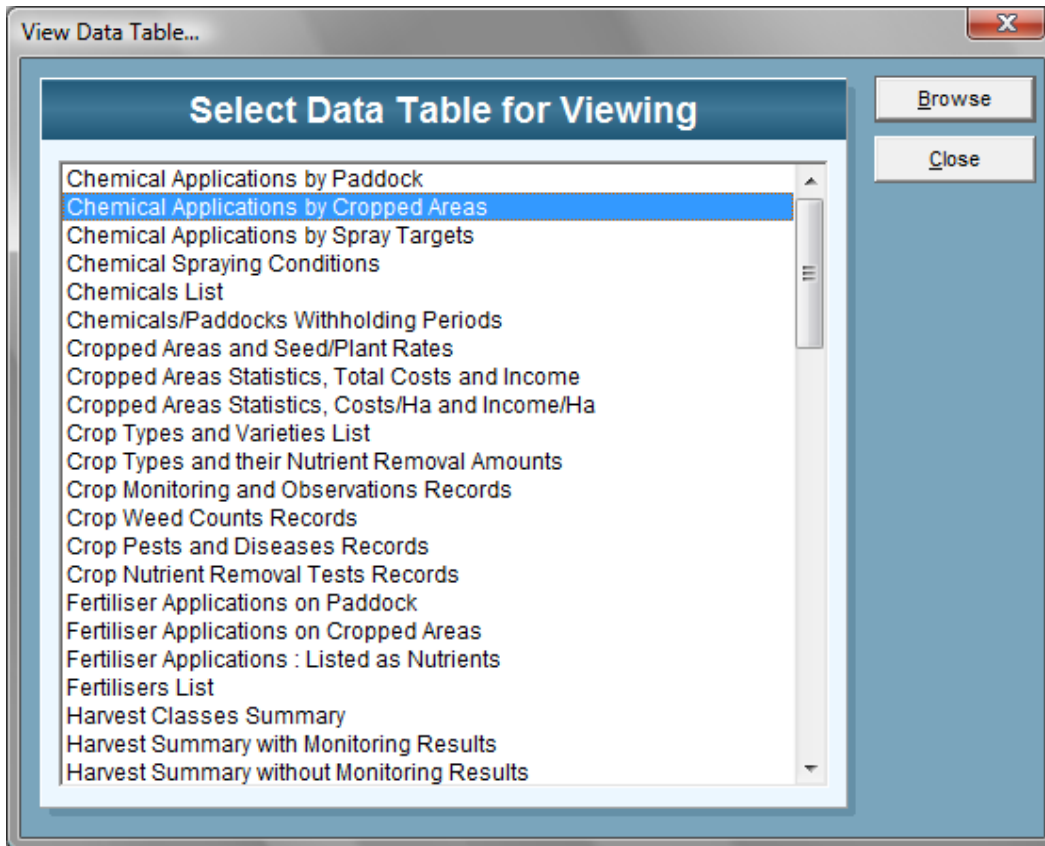
picture button, or by pressing the F4 key on your keyboard.

Browse Any Dataset

Data Tables

The first screen that you are faced with to create your custom report is the Data Table list. This list represents raw data from the database that we will extract information from.

As we only need data on crops and chemicals used, we will select 'Chemical Applications by Cropped Areas' then click Browse.



Screen layout

The Buttons

Column "Mode" Buttons

After Selecting 'Print/Export Columns' the column titles become active buttons. By clicking on the title of a column you will select that column for printing. It will change colour so you can easily see the columns chosen.

After selecting 'Set Column Sort Order' the data in each column can be sorted in either ascending or descending order to suit your requirements. Click on a column title while this column "mode" is selected. The sort order menu will pop up... choose your sort order (Ascending, or Descending).

Crop Name	Variety	Farm	Paddock	Season	Date	Chemical
Barley	Sloop	Fairport	11	2005	16/05/2005	Ammonium Sulphate
Barley	Sloop	Fairport	11	2005	16/05/2005	LI 700
Barley	Sloop	Fairport	11	2005	16/05/2005	Roundup
Barley	Sloop	Fairport	11	2005	16/05/2005	Treflan 480
Barley	Sloop	Fairport	11	2005	16/05/2005	Ammonium Sulphate
Durum	Ninety Six	Fairport	11	2007	3/04/2007	Chemwett
Field Peas	Parafield	Fairport	11	2006	29/06/2006	Duron Granules
Field Peas	Parafield	Fairport	11	2006	22/06/2006	Treflan 480
Barley	Sloop	Fairport	11	2005	16/05/2005	LI 700
Field Peas	Parafield	Fairport	11	2006	6/11/2006	Sonic ULV
Barley	Sloop	Fairport	11	2005	17/08/2005	24D Amine
Field Peas	Parafield	Fairport	11	2006	29/06/2006	Endosulphan
Durum	Ninety Six	Fairport	11	2007	3/04/2007	Agritox
Barley	Sloop	Fairport	11	2005	16/05/2005	Roundup
Field Peas	Parafield	Fairport	11	2006	22/09/2006	Targa
Field Peas	Parafield	Fairport	11	2006	22/09/2006	B S 1000
Durum	Ninety Six	Fairport	11	2007	3/04/2007	Agritox
Durum	Ninety Six	Fairport	11	2007	3/04/2007	Chemwett
Barley	Sloop	Fairport	11	2005	16/05/2005	Treflan 480
Wheat	Dagger	Fairport	11	1993	17/07/1993	Duron Liquid
Durum	Yallaro	Fairport	11	1997	4/05/1997	Lemat
Clover	Rose	Fairport	11	1996	17/07/1996	Simazine
Field Peas	Parafield	Fairport	11	2006	22/06/2006	Roundup
Wheat	Meering	Fairport	11	1997	12/05/1997	Logran
Barley	Schooner	Fairport	11	1994	1/05/1994	Roundup
Wheat	Dagger	Fairport	11	1993	16/06/1993	Hoegrass
Wheat	Dagger	Fairport	11	1993	10/05/1993	Stampete

Drag Columns Left or Right:

To arrange your columns in your preferred order across the screen. Click on the title of a column and while holding down your mouse button, drag it left or right.

Freeze Columns: Will lock the left most column and thereafter the next leftmost column. This enables you to hold those locked columns in view while panning to the right.

UnFreeze Columns: Unlocks the frozen columns.

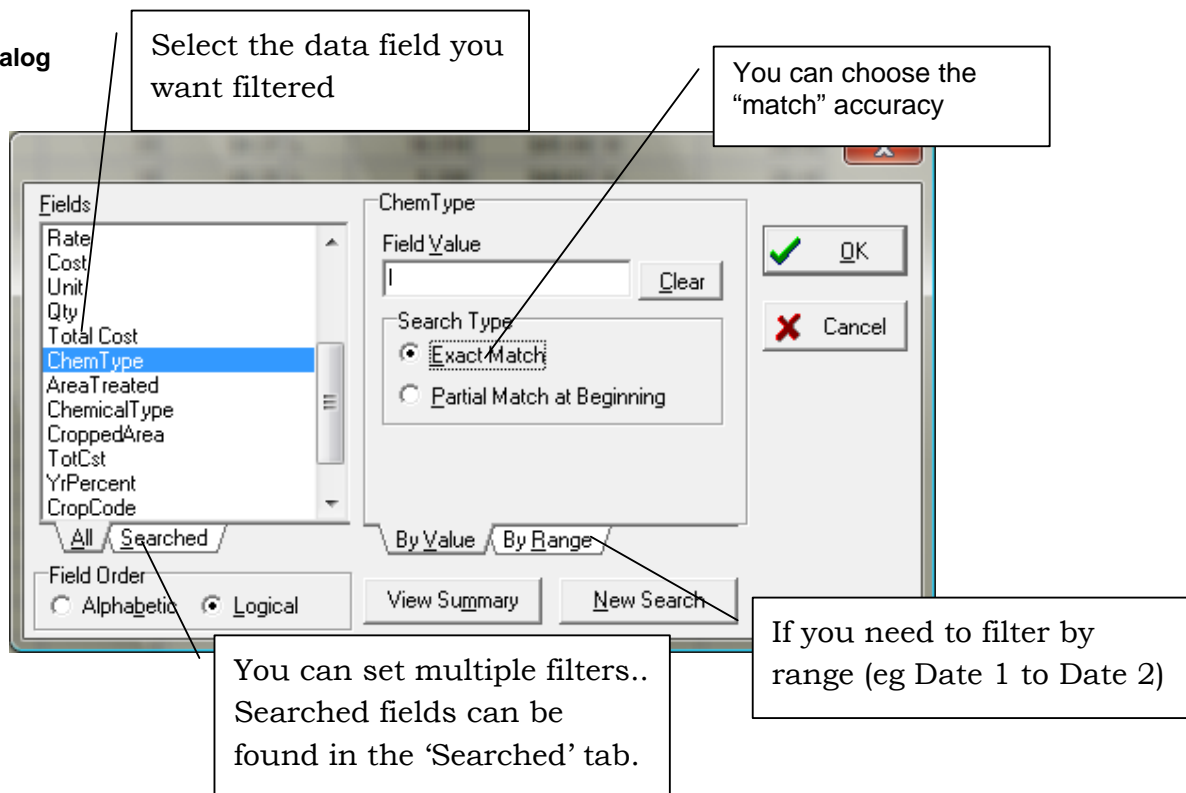
Filter: Will display the filter dialog which enables you to filter out unwanted records... more on this later.

Print Preview: To preview the selected columns in the print previewer, this option also allows the exporting of the information as PDF, CSV, XLS, TXT, WMF, HTML, QRP, RTF & JPG

Export: Export the information for editing in Excel (CSV).

Adobe PDF
Comma Separated (CSV)
Excel (XLS)
Text (TXT)
Windows Meta File (WMF)
HTML File
Quick Reports (QRP)
Rich Text (RTF)
JPEG Image File (JPG)

Filter Dialog



Fields

We are going to filter the chemicals so that we only see Insecticides, so we select the 'ChemType' field.

Field Value(s)

To filter for Insecticides only, we type 'I' into the field value area.

Search Type

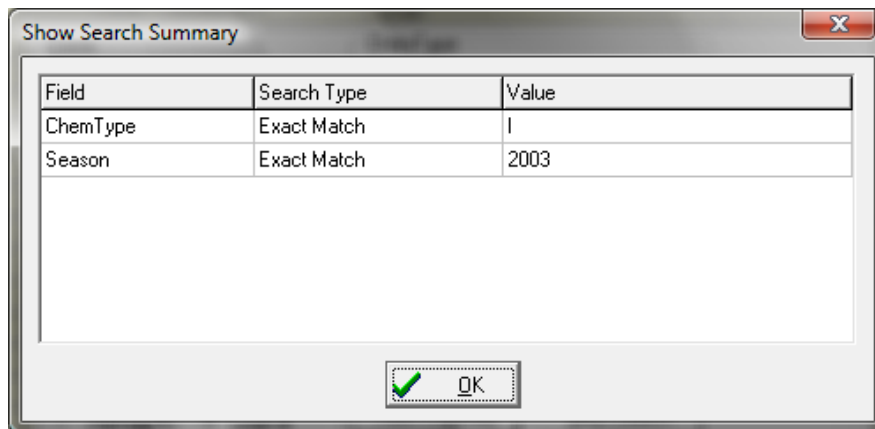
Select the 'Exact Match' option

By Value / By Range

If we want to set a range for instance, between two dates we could use this option.

View Summary

When you have set up one or more field conditions, click **View Summary** to see the conditions you have set.



Using the information in the previous section, we also need to filter the data so that we only see records from season 2003. Hint: Select the 'Season' field, then type 2003 into the Field Value.

Result

All things being equal, after clicking OK on the Filter Dialog, you will now only see Insecticides applied for the season 2003.

Crop Name	ChemType	Season	Variety	Farm	Paddock	Date	Chemical
Oat Mix	I	2003	Bettong/Marloo	Fairport	03	24/05/2003	Imidan
Oat Mix	I	2003	Bettong/Marloo	Fairport	03	24/05/2003	Imidan
Faba Beans	I	2003	Fiesta	Fairport	22	11/05/2003	Endosulphan
Field Peas	I	2003	Parafield	Fairport	22	31/10/2003	Sonic ULV
Faba Beans	I	2003	Fiesta	Fairport	22	30/10/2003	Sonic ULV
Faba Beans	I	2003	Fiesta	Fairport	23	30/10/2003	Sonic ULV
Faba Beans	I	2003	Fiesta	Fairport	23	11/05/2003	Endosulphan
Lupins	I	2003	Wonga	Fairport	24	11/05/2003	Endosulphan
Lupins	I	2003	Wonga	Fairport	24	31/10/2003	Sonic ULV
Oat Mix	I	2003	Bettong/Marloo	Fairport	06	24/05/2003	Imidan
Lucerne	I	2003	Aurora	Fairport	06	11/01/2004	Sonic
Lucerne	I	2003	Aurora	Fairport	06	20/12/2003	Sonic
Oat Mix	I	2003	Bettong/Marloo	Fairport	06	22/07/2003	Lemat
Field Peas	I	2003	Parafield	Fairport	20	30/10/2003	Sonic ULV
Field Peas	I	2003	Parafield	Fairport	20	15/06/2003	Endosulphan
Durum	I	2003	Tamaroi	Fairport	26	23/05/2003	Chlorpyrifos
Canola	I	2003	Pinnacle	Fairport	12	10/05/2003	Endosulphan
Canola	I	2003	Pinnacle	Fairport	12	19/06/2003	Sonic
Canola	I	2003	Pinnacle	Fairport	12	15/11/2003	Sonic ULV
Lucerne	I	2003	Hunter River	Fairport	18	11/01/2004	Sonic
Lucerne	I	2003	Hunter River	Fairport	18	20/12/2003	Sonic
Oat Mix	I	2003	Bettong/Marloo	Fairport	18	24/05/2003	Imidan
Lucerne	I	2003	Hunter Field	Fairport	17	20/12/2003	Sonic
Oat Mix	I	2003	Bettong/Marloo	Fairport	17	24/05/2003	Imidan
Lucerne	I	2003	Hunter Field	Fairport	17	11/01/2004	Sonic

Select the columns that you would like to include in your custom report and print or export.